

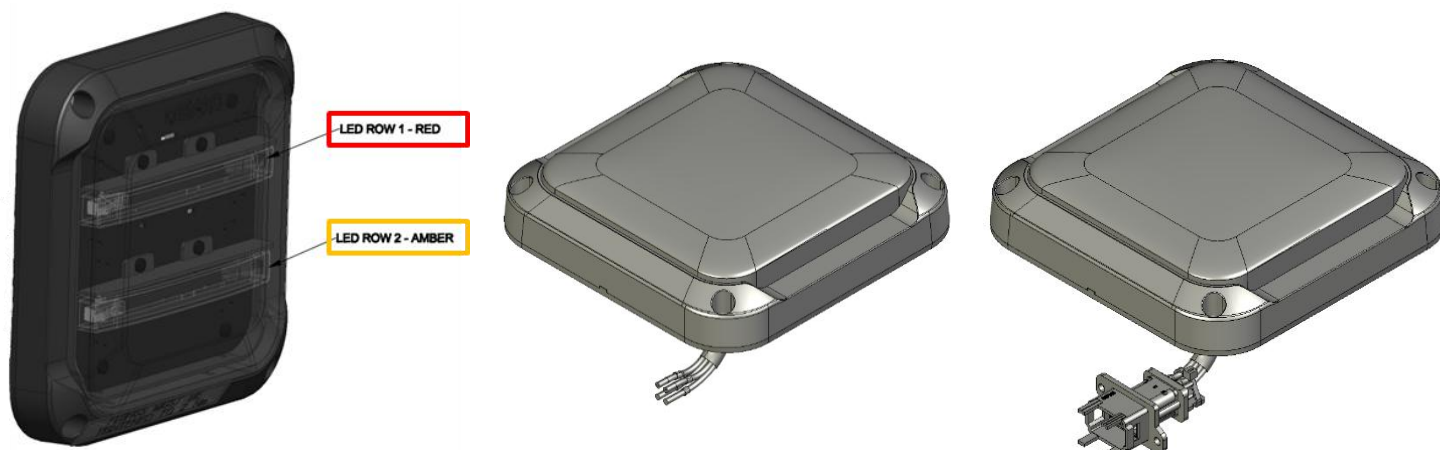
# Bicolour Lateral Indicator - 2363 series

BMAC's new Bicolour LED indicator lights are suitable for use with vehicle passenger door systems along with other applications, each coloured LED light strip can be utilised to perform individually, or in conjunction with each other in any combination to suit customer needs.



These units operate as on or off function modes and are available in 110V, with flying lead or Hypertac Connector variants.

Product Code	Description
2363-110-01	Bicolour Lateral Indicator (110V)
2363-110-02	Bicolour Lateral Indicator (110V) + Hypertac Connector



**BMAC**<sup>®</sup>  
A Methode Electronics Company

# Bicolour Lateral Indicator - 2363 series

## Function / Homologation

<b>Functions</b>	Body-side Indicator (2 LED rows) Row 1: Red Indicator Light - On/Off Mode Row 2: Amber Indicator Light - On/Off Mode (Any combination of the above colours can be utilised as needed)
<b>Homologation</b>	ISO 16750-5 (Chemical Loads) EN 50155:2021 (Environmental Reliability - Thermal Loads) EN 50121-3-2:2016+A1:2019 (EMC) EN 50155:2021 (Mechanical Design & Power of Electronic Equipment)

## Optical, Electrical, & Operational Features

<b>LED Info</b>	15 LEDs per row
<b>Emitting Colour</b>	Red, Amber
<b>Voltage</b>	110V
<b>Energy Consumption</b>	Red Indicator Light - 5.06W Amber Indicator Light - 4.29W
<b>Current Draw</b>	Red Indicator Light - 46mA Amber Indicator Light - 39mA

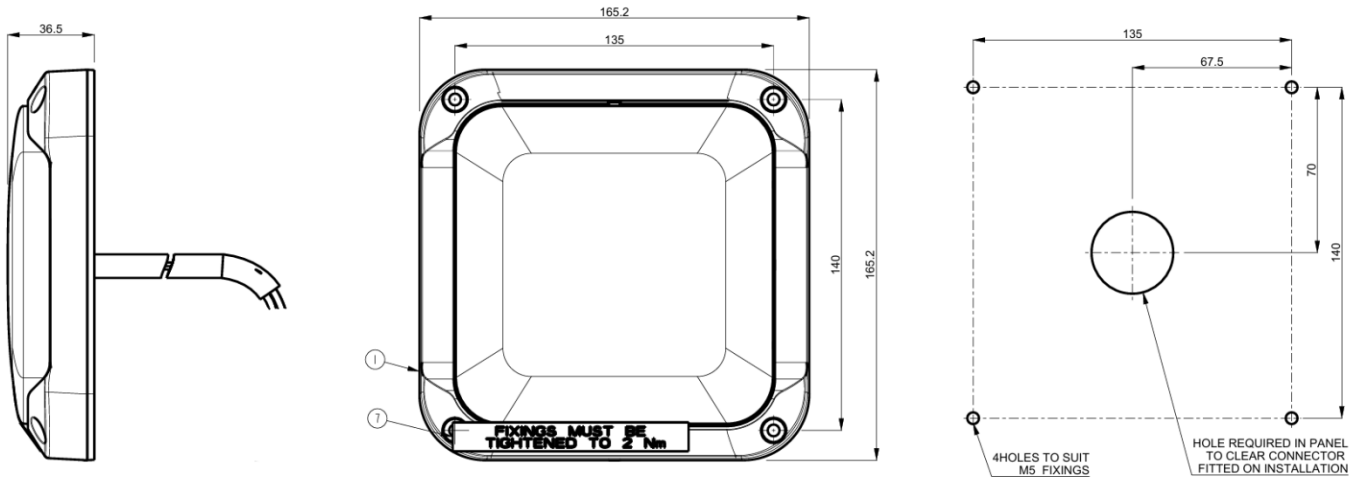
## Mechanical Features

<b>Housing Material</b>	ABS + Polycarbonate, Black
<b>Lens Material</b>	Teijin Polycarbonate L1225Z 100, Clear, Automotive Grade Hardened
<b>Weight</b>	Circa 514g
<b>Mounting Arrangement</b>	4x 5mm DIA Fixing Holes (y-axis: 140mm CRS / x-axis: 135mm CRS)
<b>IP Rating</b>	IP66 (Product) / IP54 (Rear of mounted unit)



**BMAC**<sup>®</sup>  
A Methode Electronics Company

# Bicolour Lateral Indicator - 2363 series



PANEL CUTOUT DETAILS